



# Luxembourg digital health developments

CEBR meeting 12.05.2016

NATIONAL AGENCY  
FOR INNOVATION AND RESEARCH  
**LUXINNOVATION**



# Agenda

1 The Luxembourg environment

2 Strategic development

3 Implementation plan

5 Challenges

# The Luxembourg environment

Where we came from



# Luxembourg: constant evolution



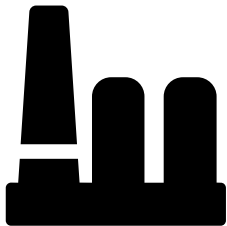
Agriculture



Industrial  
diversification



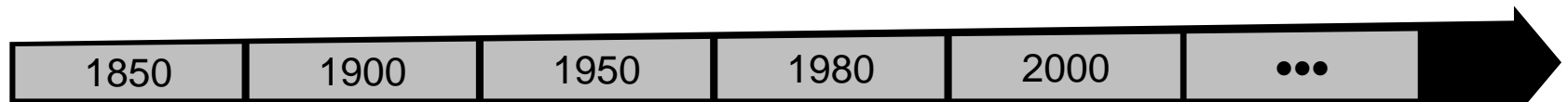
Focus on  
key innovative sectors



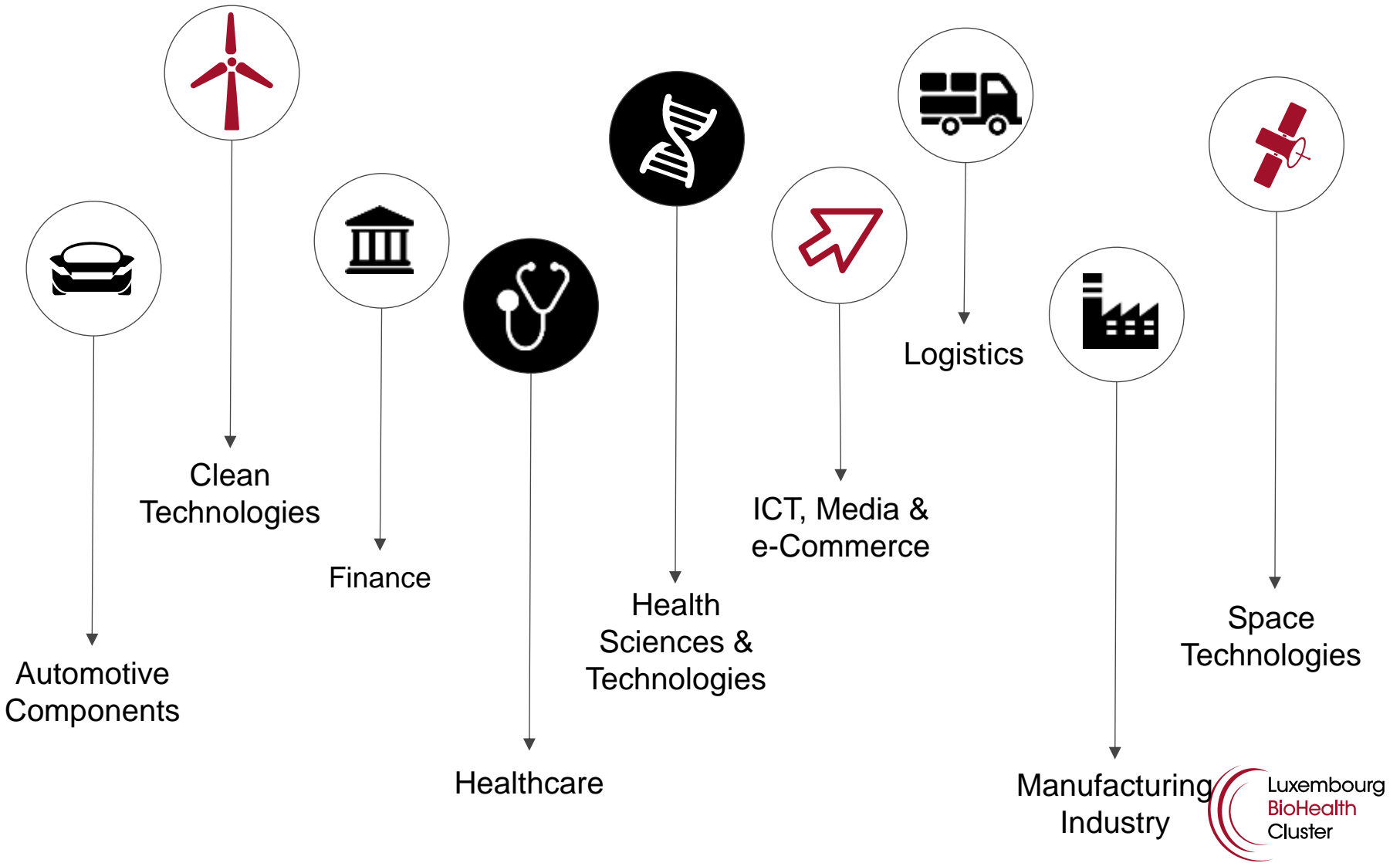
Industrialisation  
iron and steel



Financial sector

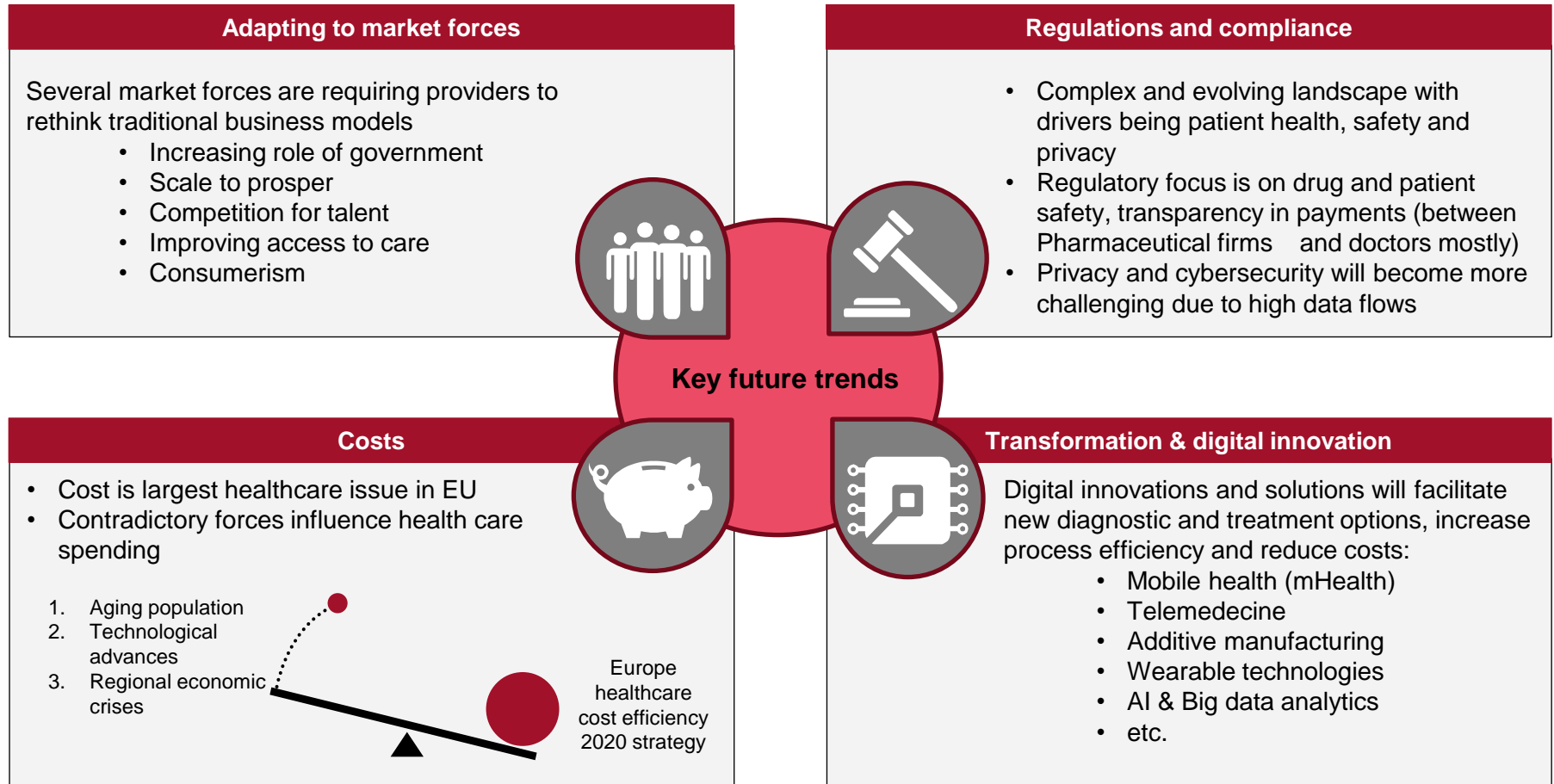


# Key business sectors



# Contradictory forces encourage cost efficiency in the EU

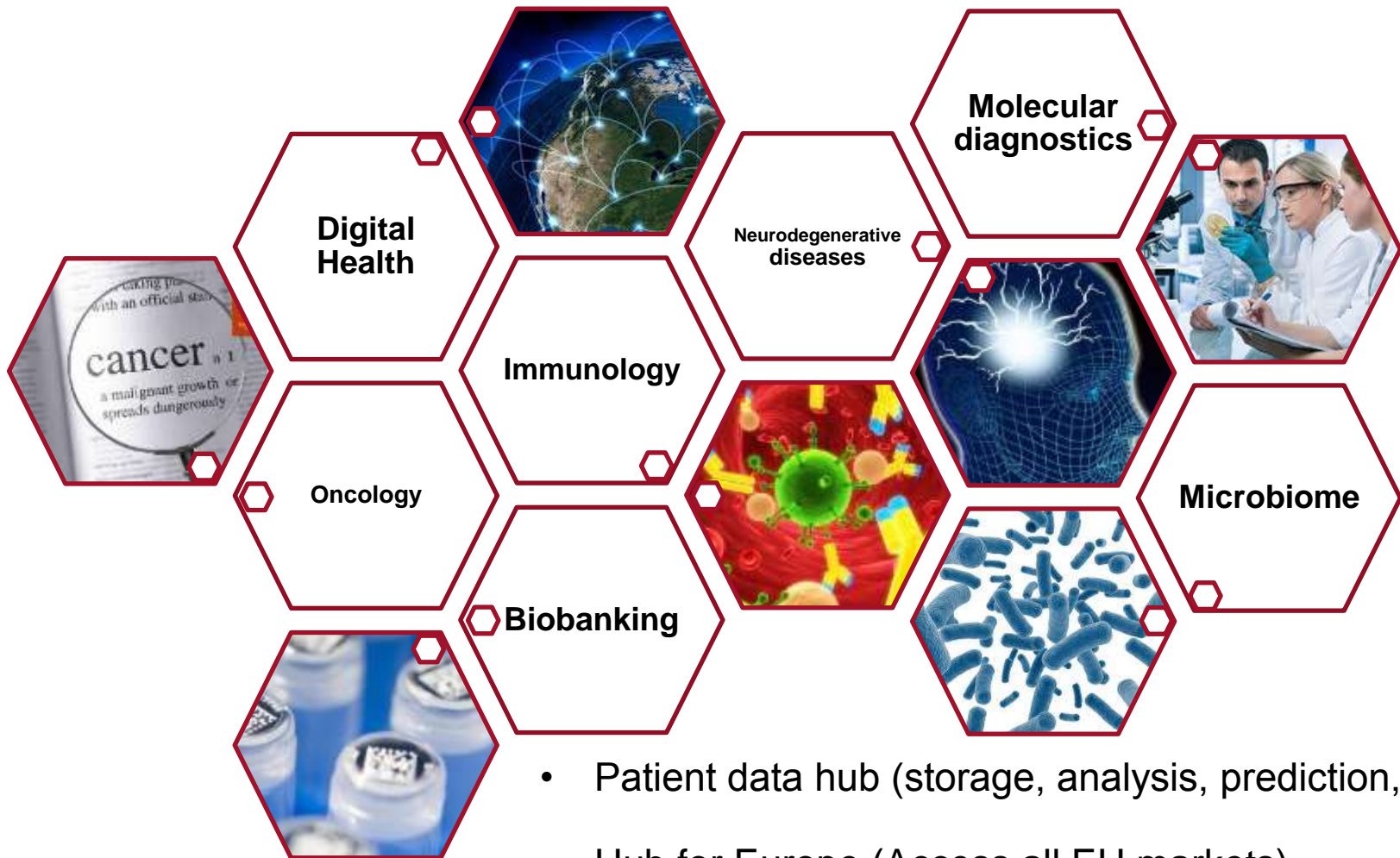
Four major trends will impact stakeholders along the EU healthcare value chain



# Strategic development

Where we want to go

# Strengthening competences, developing niches

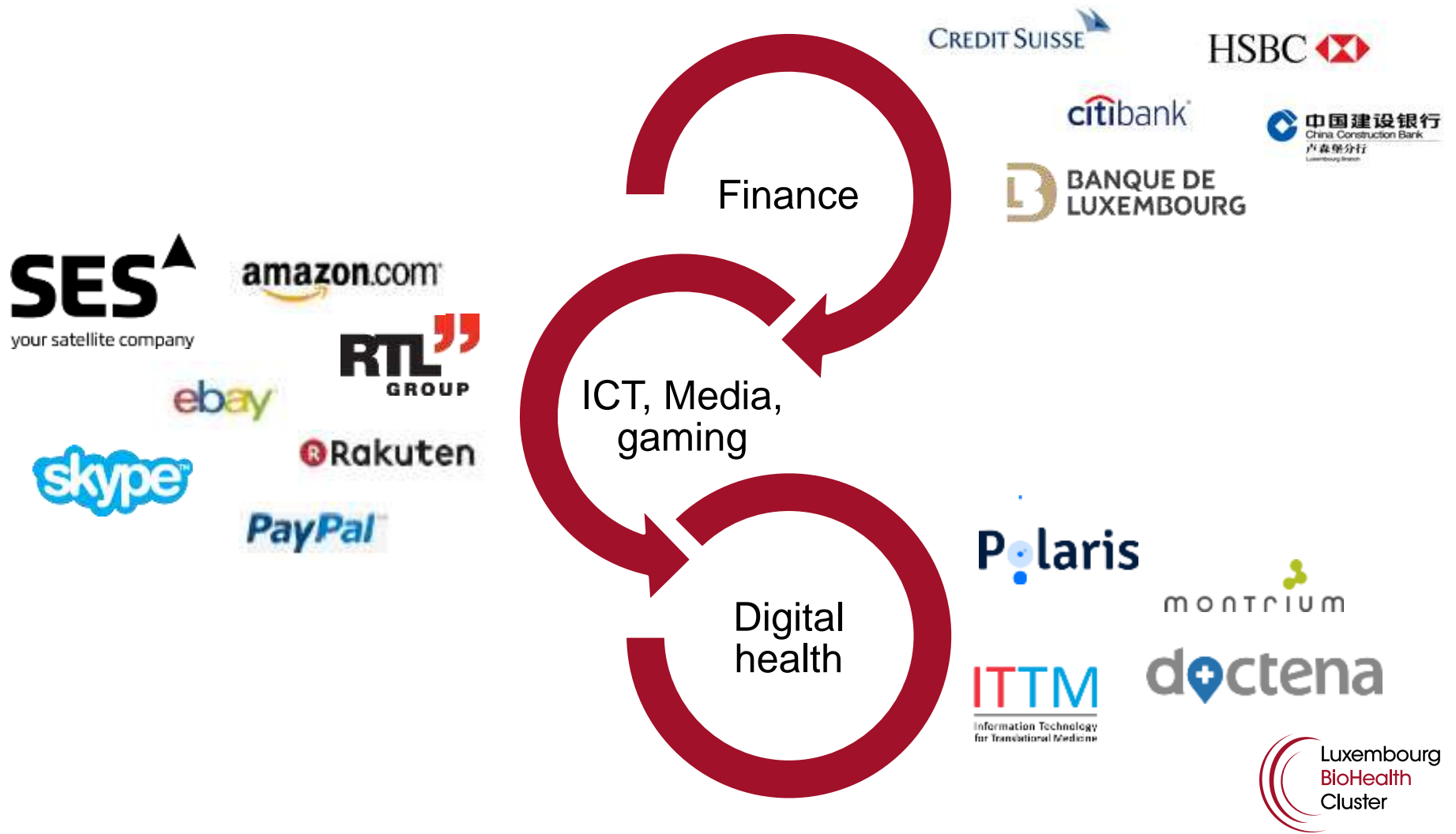


- Patient data hub (storage, analysis, prediction,...)
- Hub for Europe (Access all EU markets)
- Large scale demonstrator (proof of concept)



# Translation to Healthcare

Use what you have



# 3 year strategy

7 focus areas

Internationalization

Human resources

Communication

Health Economics

Regulatory

High Tech infrastructure

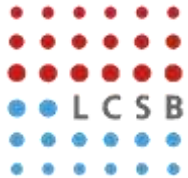
Modelling & Training

# Implementation plan

How we started

# Skills: ICT & Biomedicine

2 competence centers at the University



## Luxembourg Center for Systems Biomedicine

- Over 250 researchers
- More than 20 strategic partners
- Key topics: Neurodegenerative diseases; Parkinson, Alzheimer, Bioinformatics

Key advantages

- Opportunity to outsource research on applied market-drive research
- Development of new intellectual property
- Medium term recruitment opportunities



## Center for Security, Reliability and Trust

- Over 180 researchers
- Over 20 strategic partners
- Key topics: applied security, software verification, automation, e-biobanking



# Selected Cluster activities

Accelerate sector development

Positioning papers, propositions & projects

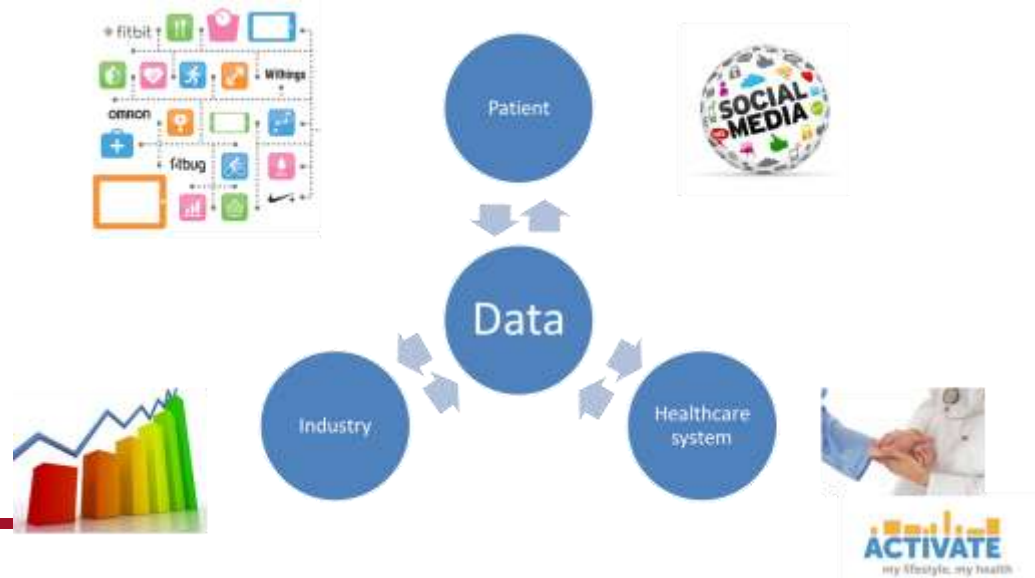
- Digital Healthcare seed fund & other funding opportunities
- Digital health, patient data legislation (transparent framework)
- Regulatory: Legal framework adaptation to facilitate health data based businesses
- Standardization, anonymization processes & commercial use
- Flagship project development (national challenges)

# Transforming Healthcare – a concept

Health IT platform for prevention and therapy

## Four Objectives:

- Increase patient quality of life and health outcome
- Boost economic impact of health related services and service innovation
- Stabilize the healthcare system's costs while maintaining service level
- Learn from the demonstrator and then scale up/transpose (e.g. other chronic diseases,...)



# High performance computer (HPC)

Infrastructure & applications for Luxembourg/European use

- IPCEI : Important Project of Common European Interest (e.g Airbus)
- Participating Countries: Italy, France, Spain, Luxembourg
- Total budget > 6€ billion
- Roadmap & application propositions: 20<sup>th</sup> June 2016
- Test bed & infrastructures for:



Smart Space, FINTEC, Smart Mobility, Smart Energy, Smart Building,  
Civil Protection, Smart Agriculture, Manufacturing 4.0, Personalized Medicine

# Challenges

Lessons learned



# Challenges

- Vision & Strategy acceptance (focus on few subjects only)
- Buy in & commitment of ALL stakeholders
- Long term financial & political support

Dr Thomas Dentzer

*Cluster Manager*

**LUXINNOVATION GIE**

5, avenue des Hauts-Fourneaux  
L-4362 Esch-sur-Alzette

T (+352) 43 62 63 - 875

M (+352) 621 348 064

[thomas.dentzer@luxinnovation.lu](mailto:thomas.dentzer@luxinnovation.lu)



[www.biohealthcluster.lu](http://www.biohealthcluster.lu)

# Thank you!

## Questions and answers

The Luxembourg BioHealth Cluster is powered by:

NATIONAL AGENCY  
FOR INNOVATION AND RESEARCH  
**LUXINNOVATION**



**LUXINNOVATION** benefits  
from the support of:



**European Union**  
European Regional Development Fund  
Investing in your future

